



# Table of Contents

- What is ICT CHAMBER
- Membership of the ICT CHAMBER
- Our Services
- Our Strategy
- Investment Opportunity



# What is ICT CHAMBER



ICT CHAMBER is a Member based organization representing ICT Companies in Rwanda under the Private Sector Federation.

Membership of the Chamber Exceeds 240 member companies at different stages;

- Startups
- SMEs
- Corporates



# Our Membership Associations



**FINTECH**



**IT Hardware & Solutions**



**Connectivity & Infrastructure**



**e-Commerce & e-Services**

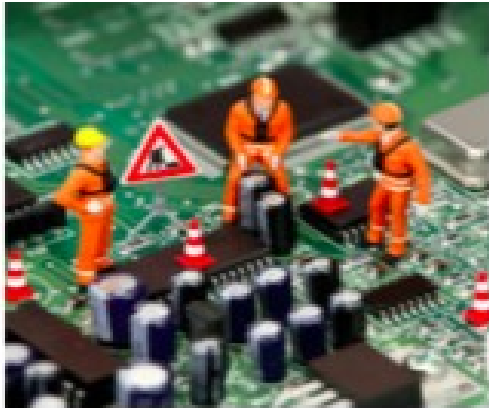


**Content Creation, Media  
& Broadcasting**



**HUBS, INCUBATORS &  
CAPACITY BUILDING**

# Our Membership Associations



**Drone & Robotics**

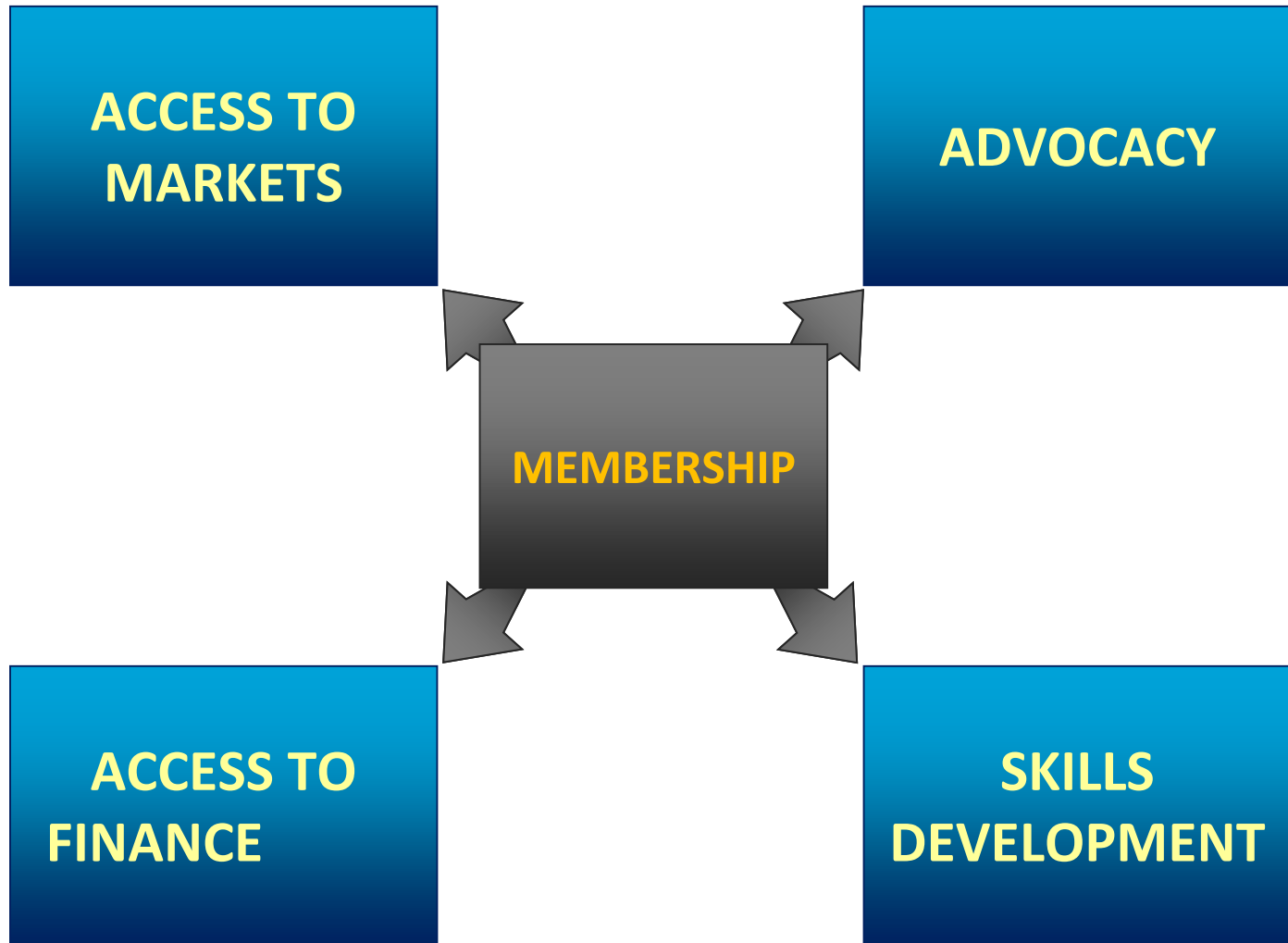


**BPO & Global Sourcing**



**Digital Services Agents  
Networks**

# MEMBER SERVICES CATEGORIZATION



# OUR STRATEGIC PILLARS

## MISSION:

**CREATE 100 TECHNOLOGY COMPANIES THAT ARE EACH VALUED AT OVER \$50M BY 2025**

**CREATE NEW  
TECHNOLOGY  
COMPANIES**

**GROW  
EXISTING  
TECHNOLOGY  
COMPANIES**

**INCREASE  
ADOPTION OF  
DIGITIZATION**

**EXPAND  
DIGITAL  
EXPORTS**

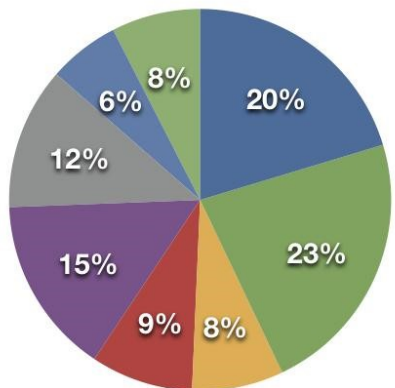
**INCREASE  
INVESTMENT  
IN ICT SECTOR**

**TECHNOLOGY SUPPLY SIDE**

**TECHNOLOGY DEMAND SIDE**

**ENABLER**

# INCREASE INVESTMENT IN ICT SECTOR



## TYPE OF INVESTMENT

## HOW TO

### PORTFOLIO INVESTMENTS

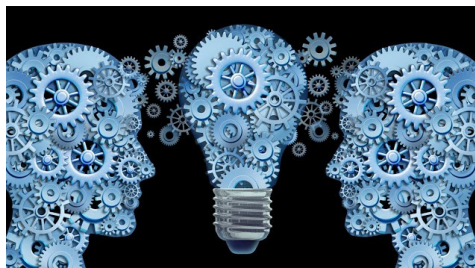
- Invest in Rwandan Companies for; Equity or DEBT
- Invest in Rwanda Innovation Fund as a Limited Partner

### TECHNOLOGY & KNOWLEDGE INVESTMENTS / TRANSFER

- Partner with Rwandan Company to ;
  - I. Reach New Markets
  - II. Develop New Solutions for existing or New Markets
- Participate as in Internship Program as a host for Rwandan Students studying in Japan or in Rwanda strengthen relationships for future markets

### DIRECT INVESTMENTS

- Establish Company in Rwanda
  - I. New Company
  - II. Branch / Subsidiary
- Invest in Kigali Innovation City Special Purpose Vehicle

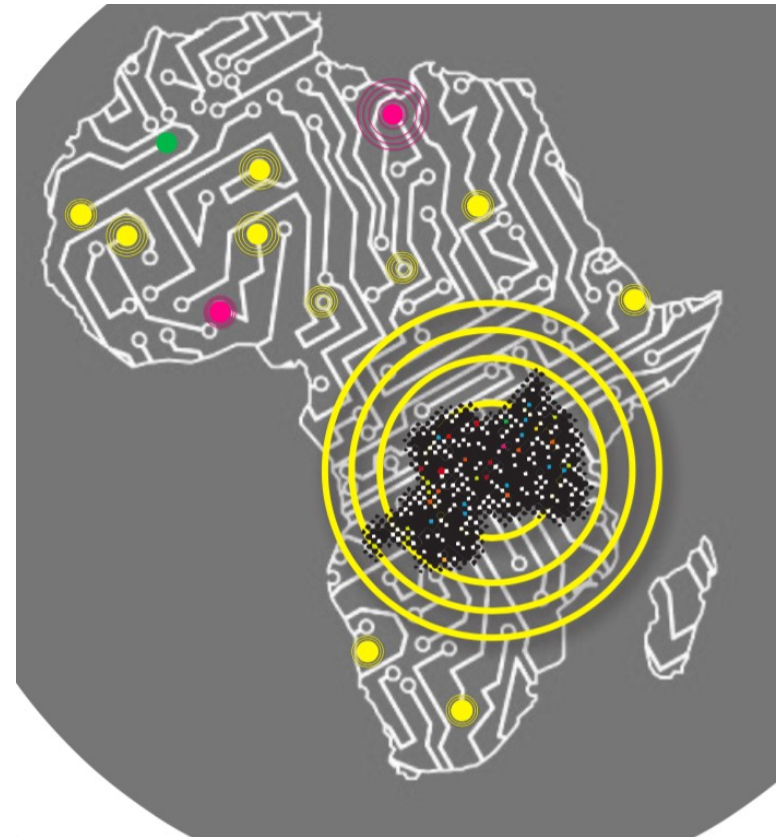




# WHY PARTNER WITH Rwandan Companies?

## PARTNERSHIP OPPORTUNITIES: COUNTRIES WHERE OUR MEMBERS ARE OPERATING

- BENIN
- BURKINA FASO
- BURUNDI
- CAMEROON
- DEMOCRATIC REPUBLIC OF CONGO
- GABON
- GHANA
- KENYA
- MALAWI
- TANZANIA
- SOUTH AFRICA
- TOGO



# **INVESTMENT OPPORTUNITIES THROUGH RWANDA INNOVATION FUND (Venture Fund)**

- **Limited Partnership (LP) Investment in the Fund**
- **Co-Investments in the startups**



**ARE YOU INTERESTED ?**  
**Or**  
**HAVE MORE QUESTIONS?**



# THANK YOU

ALEX NTARE

CEO

RWANDA ICT CHAMBER

[alex@ict.rw](mailto:alex@ict.rw)

END